

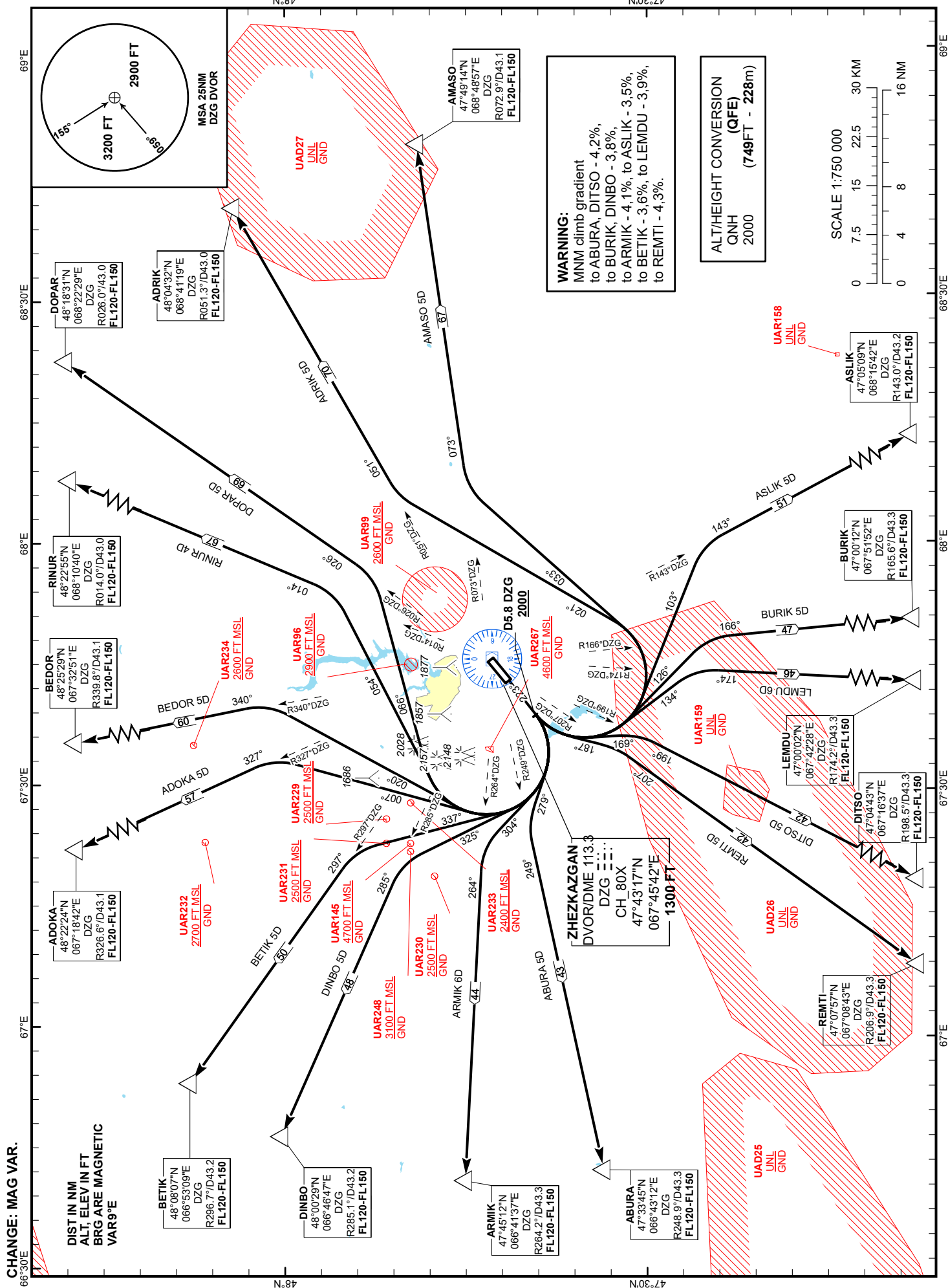
STANDARD DEPARTURE
CHART - INSTRUMENT
(SID) - ICAO

TRANSITION ALTITUDE
10000 FT

ZHEZKAZGAN TOWER 127.1
ZHEZKAZGAN ATIS (EN) 131.4
ZHEZKAZGAN ATIS (RU) 122.4

ABURA 5D, ADOKA 5D, ADRIK 5D,
AMASO 5D, ARMIK 6D, ASLIK 5D,
BEDOR 5D, BETIK 5D, BURIK 5D,
DINBO 5D, DITSO 5D, DOPAR 5D,
LEMDU 6D, REMTI 5D, RINUR 4D.

ZHEZKAZGAN
RWY 22



STANDARD DEPARTURE ROUTES – INSTRUMENT (SID) ZHEZKAZGAN RWY 22	
RINUR 4D After take-off climb straight ahead to 2000 or above. At 5.8NM DZG, turn RIGHT on track 054° until intercept R014°DZG, then proceed on track 014° to RINUR (R014.0° D43.0NM DZG). Cross RINUR at FL120 - FL150.	REMTI 5D After take-off climb straight ahead to 2000 or above. At 5.8NM DZG, turn LEFT on track 187° until intercept R207°DZG, then proceed on track 207° to REMTI (R206.9° D43.3NM DZG). Cross REMTI at FL120 - FL150.
DOPAR 5D After take-off climb straight ahead to 2000 or above. At 5.8NM DZG, turn RIGHT on track 066° until intercept R026°DZG, then proceed on track 026° to DOPAR (R026.0° D43.0NM DZG). Cross DOPAR at FL120 - FL150.	ABURA 5D After take-off climb straight ahead to 2000 or above. At 5.8NM DZG, turn RIGHT on track 279° until intercept R249°DZG, then proceed on track 249° to ABURA (R248.9° D43.3NM DZG). Cross ABURA at FL120 - FL150.
ADRIK 5D After take-off climb straight ahead to 2000 or above. At 5.8NM DZG, turn LEFT on track 021° until intercept R051°DZG, then proceed on track 051° to ADRIK (R051.3° D43.0NM DZG). Cross ADRIK at FL120 - FL150.	ARMIK 6D After take-off climb straight ahead to 2000 or above. At 5.8NM DZG, turn RIGHT on track 304° until intercept R264°DZG, then proceed on track 264° to ARMIK (R264.2° D43.3NM DZG). Cross ARMIK at FL120 - FL150.
AMASO 5D After take-off climb straight ahead to 2000 or above. At 5.8NM DZG, turn LEFT on track 033° until intercept R073°DZG, then proceed on track 073° to AMASO (R072.9° D43.1NM DZG). Cross AMASO at FL120 - FL150.	DINBO 5D After take-off climb straight ahead to 2000 or above. At 5.8NM DZG, turn RIGHT on track 325° until intercept R285°DZG, then proceed on track 285° to DINBO (R285.1° D43.2NM DZG). Cross DINBO at FL120 - FL150.
ASLIK 5D After take-off climb straight ahead to 2000 or above. At 5.8NM DZG, turn LEFT on track 103° until intercept R143°DZG, then proceed on track 143° to ASLIK (R143.0° D43.2NM DZG). Cross ASLIK at FL120 - FL150.	BETIK 5D After take-off climb straight ahead to 2000 or above. At 5.8NM DZG, turn RIGHT on track 337° until intercept R297°DZG, then proceed on track 297° to BETIK (R296.7° D43.2NM DZG). Cross BETIK at FL120 - FL150.
BURIK 5D After take-off climb straight ahead to 2000 or above. At 5.8NM DZG, turn LEFT on track 126° until intercept R166°DZG, then proceed on track 166° to BURIK (R165.6° D43.3NM DZG). Cross BURIK at FL120 - FL150.	ADOKA 5D After take-off climb straight ahead to 2000 or above. At 5.8NM DZG, turn RIGHT on track 007° until intercept R327°DZG, then proceed on track 327° to ADOKA (R326.6° D43.1NM DZG). Cross ADOKA at FL120 - FL150.
LEMDU 6D After take-off climb straight ahead to 2000 or above. At 5.8NM DZG, turn LEFT on track 134° until intercept R174°DZG, then proceed on track 174° to LEMDU (R174.2° D43.3NM DZG). Cross LEMDU at FL120 - FL150.	BEDOR 5D After take-off climb straight ahead to 2000 or above. At 5.8NM DZG, turn RIGHT on track 020° until intercept R340°DZG, then proceed on track 340° to BEDOR (R339.8° D43.1NM DZG). Cross BEDOR at FL120 - FL150.
DITSO 5D After take-off climb straight ahead to 2000 or above. At 5.8NM DZG, turn LEFT on track 169° until intercept R199°DZG, then proceed on track 199° to DITSO (R198.5° D43.3NM DZG). Cross DITSO at FL120 - FL150.	